



# RAF Croughton New Main Gate and Large Vehicle Inspection Site (LVIS)

Planning Consultation

# Presentation Outline

1. Scheme Overview
2. Location on Base
3. Site Plan and Junction layout
4. Visualisation

# Scheme Overview

## Scheme Description:

New Main Gate and LVIS facility at RAF Croughton.

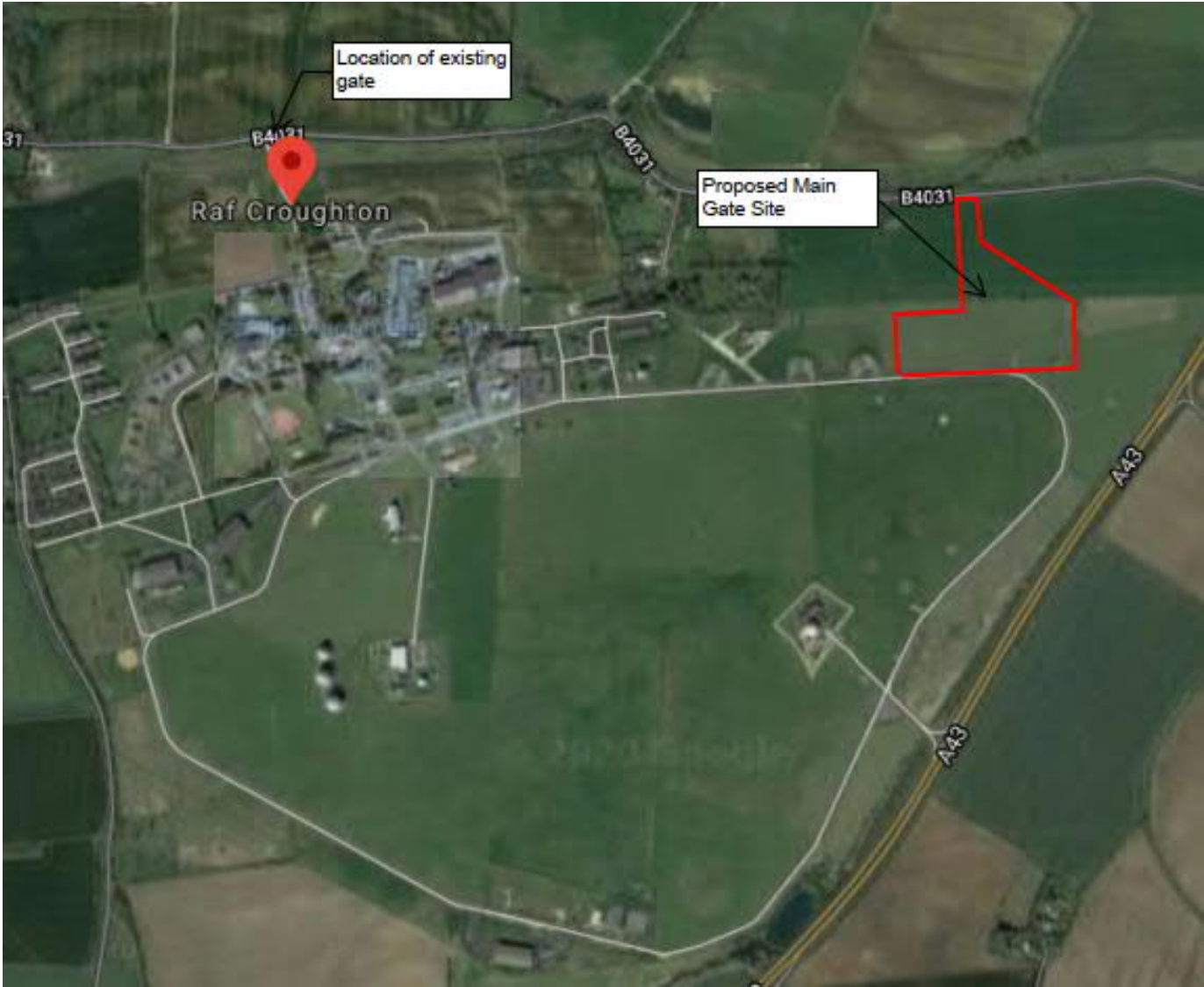
## Need for the Development:

RAF Croughton's existing entry control point is not compliant with the current US codes. It has no traffic speed reduction capability and no queuing capacity (being only approx. 50m from the public highway), which has the potential to create hazardous traffic congestion on the public highway. In the event of any suspicious vehicle the protocol is to close the public road, which stops all access to the installation and also stops all local public traffic from Croughton Village to & from the A43. The aim of the project is to provide a new purpose-built facility to support the security forces mission.

## Proposed Development:

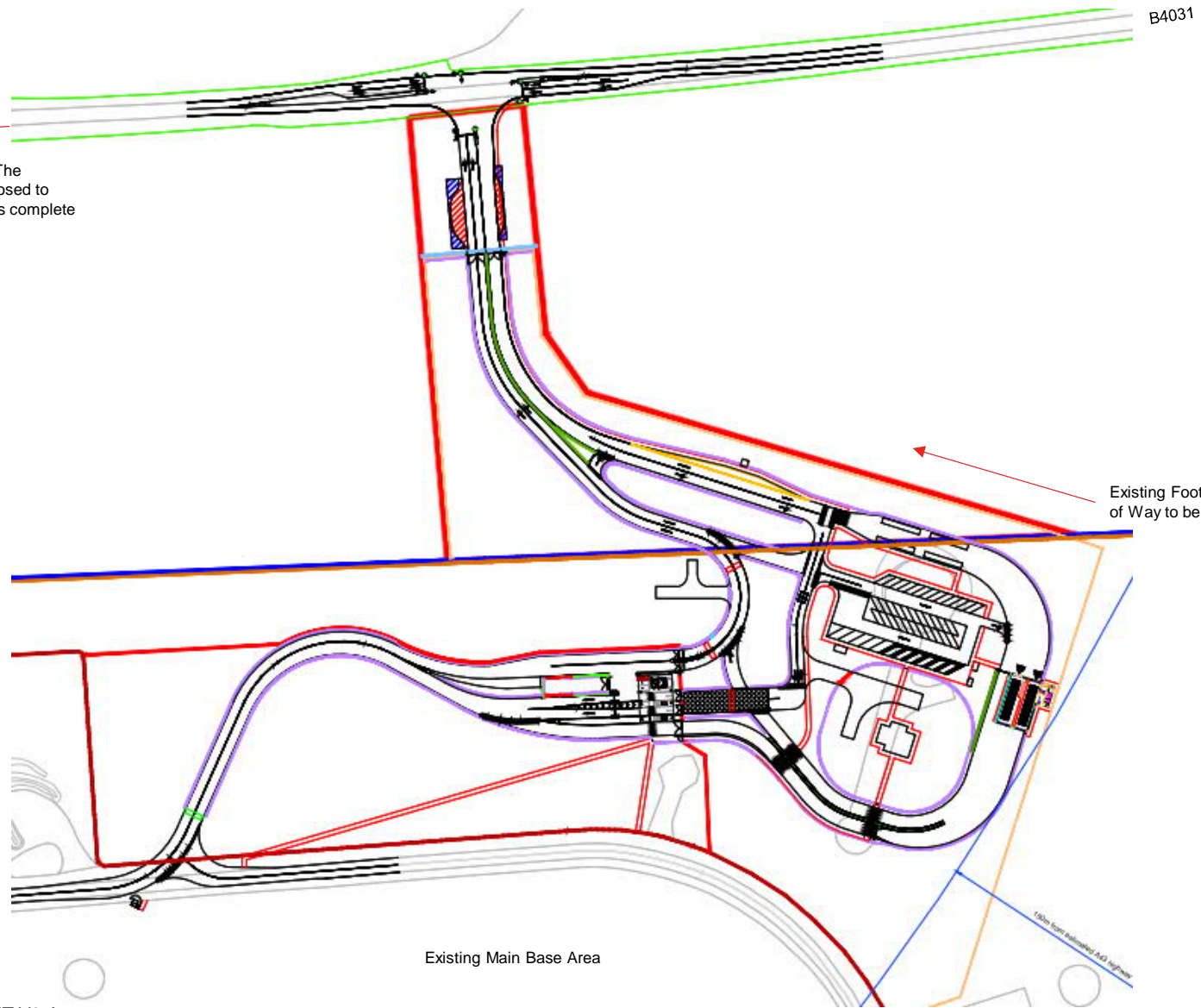
- The Visitor Centre will comprise an area for checking in visitors, issuing passes, and waiting for non-cleared personnel.
- The LVIS will comprise an area for inspecting large commercial vehicles, with associated checking in and pass issue facilities and driver waiting area.
- The Guard House will have a control facility with additional overhead canopy for pass checks of those driving privately owned vehicles (POVs).
- An overwatch will also be provided as part of the gate's security measures.

# Location on Base



# Site Plan

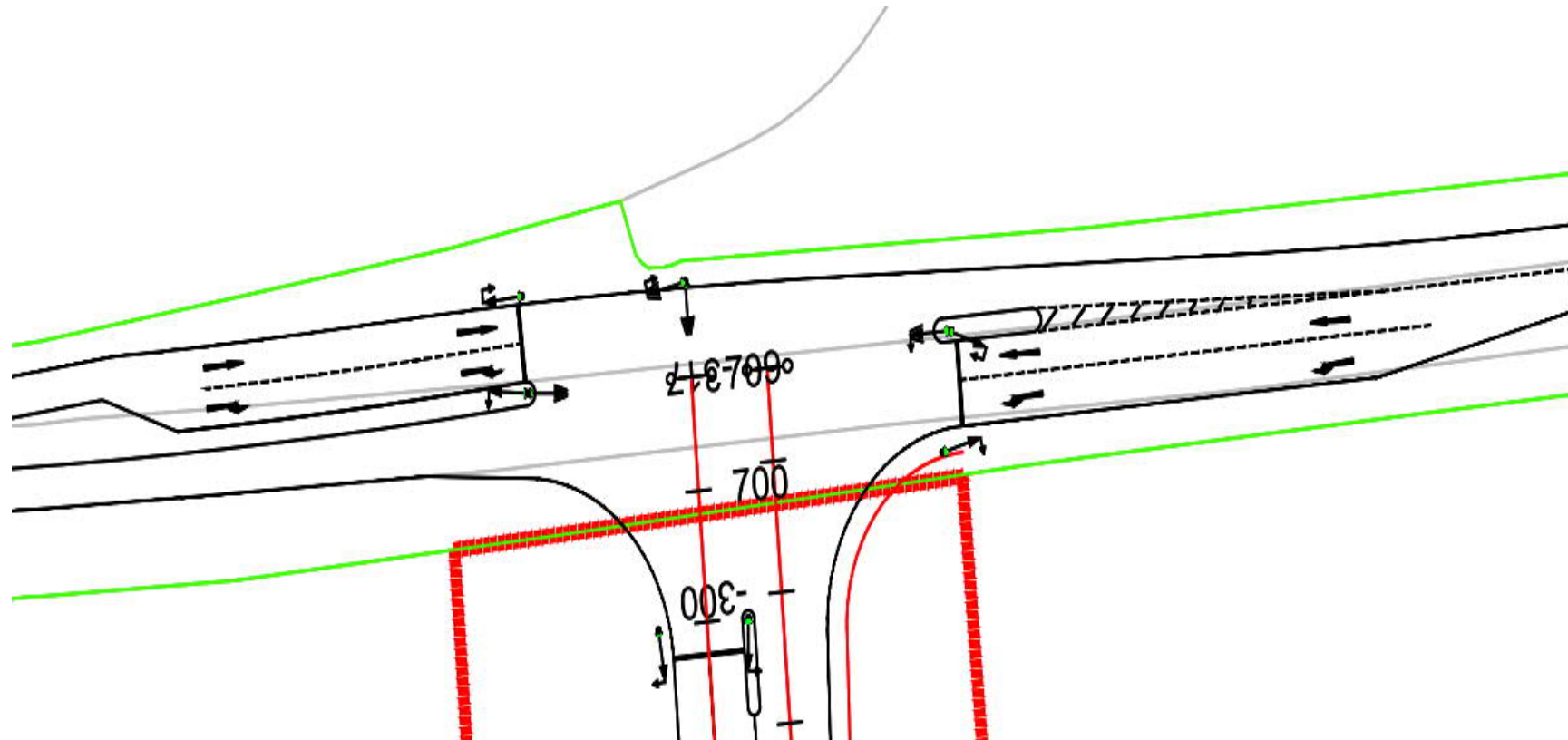
Existing Main Gate – The existing gate will be closed to traffic once new gate is complete and open.



Mott MacDonald  
RAF Croughton Building 180 New MET V3 Antennas

27 May 2020

# Proposed Signal Controlled Junction with B4031



# Visualisation



# Key Facts and Timeline

## Key Facts:

- Seeking planning permission for:
  - Construction of new Main Gate and LVIS Facility;
  - New Junction with B4031.
- Works will be approved based on a mix of Permitted Development and Planning Application – discussions are ongoing with the Local Authority.
  - Visitor Centre, LVIS, Guard House and Junction will form part of the Planning Application.
  - Infrastructure, Overwatch and road layout are Permitted Development.
- Development will not result in an increase in personnel numbers or traffic to the Base.

## Timeline:

- Target date to submit the Planning Application is the end of July 2020.
- Construction aimed to commence Q4 2022 with a 12-18 month construction programme.



**M**  
MOTT  
MACDONALD **M**

Thank you

